

MAXIMUM AREA PER EXTINGUISHER

CLASSIFICATION OF HAZARD = MODERATE HAZARD
 MODERATE HAZARD = 100 m²
 LOW HAZARD = 200 m²
 HIGH HAZARD = 75 m²

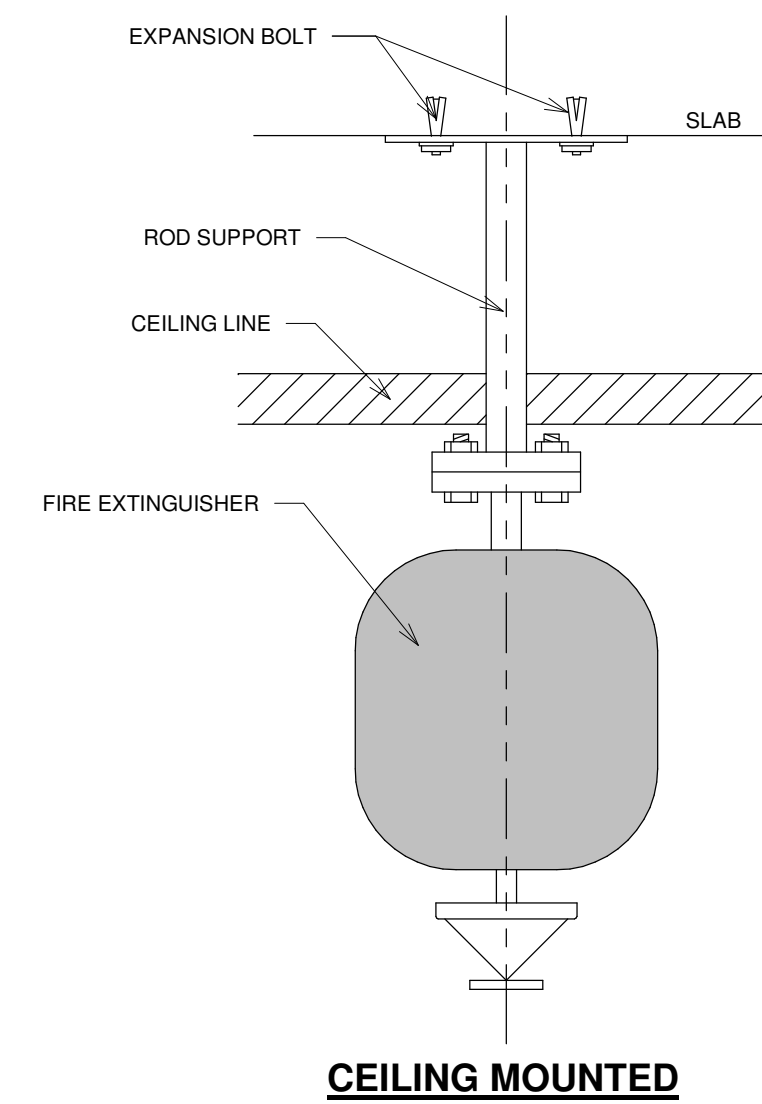
FIRE EXTINGUISHER SCHEDULE		
Description	Quantity	Location
10 lbs Fire Extinguisher, ABC	22	As shown (see installation detail)
10 lbs Ceiling mounted Fire Extinguisher, ABC (Chem/lab type)	16	As shown (see installation detail)

1 SCHEDULE OF EQUIPMENT

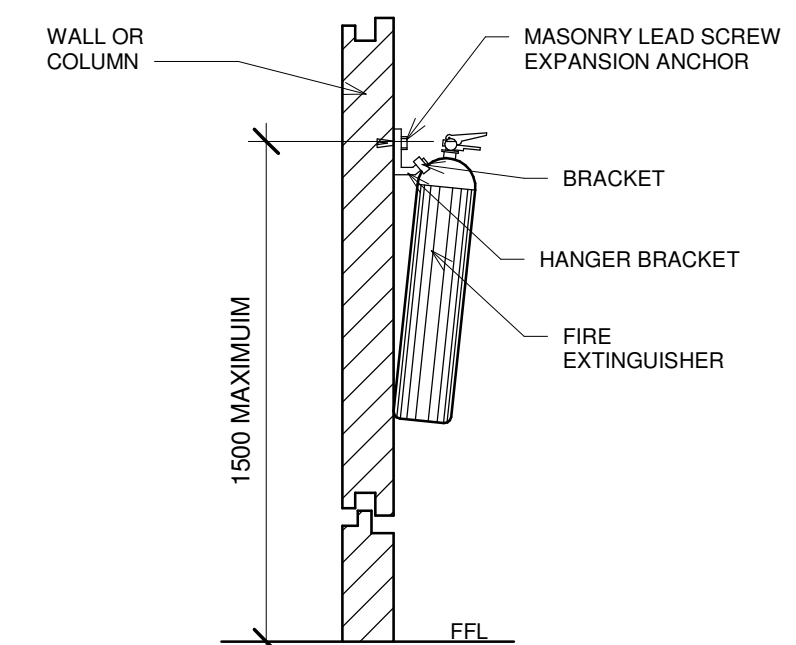
NOTES

1. THE SELECTION AND PLACEMENT OF PORTABLE FIRE EXTINGUISHER SHALL BE IN ACCORDANCE WITH RA 9514 THE FIRE CODE OF THE PHILIPPINES.
2. FIRE EXTINGUISHERS SHALL BE LOCATED WHERE THEY WILL BE READILY AVAILABLE AND ACCESSIBLE IN THE EVENT OF FIRE.
3. FIRE EXTINGUISHER SHALL NOT BE OBSTRUCTED FROM VIEW.
4. THE TOP OF PORTABLE FIRE EXTINGUISHER SHALL BE INSTALLED NOT MORE THAN 1500mm ABOVE THE FLOOR.
5. FIRE EXTINGUISHER SHALL BE PLACED SO THAT OPERATING MANUAL SHALL FACE OUTWARD. THE LOCATION OF FIRE EXTINGUISHER SHALL BE MARKED CONSPICUOLY.
6. THE MINIMUM TRAVEL TO EXTINGUISHER SHALL NOT BE MORE THAN 15 METERS ALONG PATHWAY.

2 GENERAL NOTES




CEILING MOUNTED



WALL MOUNTED

3 FIRE EXTINGUISHER DETAIL

	FROM THE OFFICE: PHYSICAL PLANNING AND DEVELOPMENT OFFICE 2/F 202 ADMINISTRATION BLDG. MARIANO MARCOS STATE UNIVERSITY CITY OF BATAAC, 2906 ILOCOS NORTE TELEFAX: +63 (77)92-3191	DRAWN BY: BJAY A. DAYANG DRAFTSMAN I PREPARED BY: DENNIS CLYDE G. ACANTILADO MECHANICAL ENGINEER	SIGNED & SEALED BY: _____ PROFESSIONAL MECHANICAL ENGINEER PRC NO.: _____ PTR: _____ PLACE ISSUED: _____ DATE: _____ TIN: _____	PROJECT TITLE: CONSTRUCTION OF RDE BUILDING PHASE III LOCATION: MMSU CRL-CITY OF BATAAC, ILOCOS NORTE	CONFORME: BJORN S. SANTOS DIRECTOR, RESEARCH RECOMMENDING APPROVAL: ROMEO R. DULDULAO DIRECTOR, PPOD	APPROVED BY: SHIRLEY C. AGRUPIS UNIVERSITY PRESIDENT	SHEET CONTENTS: SCHEDULE OF EQUIPMENT GENERAL NOTES FIRE EXTINGUISHER DETAIL <small>Drawings and specifications and other contract documents duly signed, stamped or sealed, as instruments of service, are the intellectual property and documents of the architect, whether the object for which they are made is executed or not. It shall be unlawful for any person to duplicate or to make copies of said documents for use in the repetition of and for other project or building, whether executed partly or in whole, without the written consent of architect or author of said document. Art. IV-Sec. 338A9266</small>	SHEET NO: M-13 13 18
---	--	---	--	---	---	---	---	----------------------------